

# Hammered Dulcimer Celtic/Rhythmic Embellishments

## Tunes for this Workshop

Bay of Fundy	St. Josephs Reel
Lady of the Lake	Swallowtail Jig
Woodchoppers Reel	The Moon and the Seven Stars

All tunes complete with notation are available at: [www.jonweinberg.com](http://www.jonweinberg.com) on the **Workshops** page

## Drags

Drag: is a deliberate, controlled double or triple bounce with the same hand/hammer

### Simple Standalone Drags

Used for rhythmic interest or emphasis

- can be a transitional embellishment – often where note repeats and/or when starting a descending series of notes
- often more interesting if NOT on the first beat of a measure
- can have an smoothing effect

### St. Joseph's Reel

Musical notation for St. Joseph's Reel, measures 2 through 12. The notation is in treble clef with a key signature of one sharp (F#) and a 4/4 time signature. Measures 2, 3, and 4 are on the first staff, and measures 9 through 12 are on the second staff. The notation includes various rhythmic patterns and hammered dulcimer-specific techniques, with 'RR' markings below the notes in measures 4, 10, and 11. Measure numbers 2, 3, 4, 9, 10, 11, and 12 are enclosed in boxes above the notes.

### Swallowtail Jig

Musical notation for Swallowtail Jig, measures 10 through 14. The notation is in treble clef with a key signature of one sharp (F#) and a 4/4 time signature. Measures 10, 11, 12, 13, and 14 are on a single staff. The notation includes various rhythmic patterns and hammered dulcimer-specific techniques, with 'RR' markings below the notes in measures 11 and 12. Measure numbers 10, 11, 12, 13, and 14 are enclosed in boxes above the notes.

# Hammered Dulcimer Celtic/Rhythmic Embellishments

## Bay of Fundy

Variations can change the feel of the tune

Musical notation for the first variation of Bay of Fundy. It is in 4/4 time with a key signature of one sharp (F#). The melody starts with a repeat sign. The first measure is marked with a box containing the number 1. The second measure has a 'D' above it. The third measure is marked with a box containing the number 2. The fourth measure is marked with a box containing the number 3. Below the staff, the letters 'RR' are written.

Musical notation for the second variation of Bay of Fundy. It is in 4/4 time with a key signature of one sharp (F#). The melody starts with a repeat sign. The first measure is marked with a box containing the number 1. The second measure has a 'D' above it. The third measure is marked with a box containing the number 2. The fourth measure is marked with a box containing the number 3. Below the staff, the letters 'RR' are written.

Musical notation for the third variation of Bay of Fundy. It is in 4/4 time with a key signature of one sharp (F#). The melody starts with a repeat sign. The first measure is marked with a box containing the number 1. The second measure has a 'D' above it. The third measure is marked with a box containing the number 2. The fourth measure is marked with a box containing the number 3. Below the staff, the letters 'RR' are written.

## Can Make a Difficult Section Easier to Play

### Woodchoppers Reel

Start a long and wide descending series of notes and then slide your hammers downwards:

- Make sure you hit the correct first and last notes and just slide over the ones in the middle

Musical notation for Woodchoppers Reel in 4/4 time with a key signature of one sharp (F#). The melody starts with a repeat sign. The first measure is marked with a box containing the number 1. The second measure is marked with a box containing the number 2. The third measure is marked with a box containing the number 3. A bracket labeled 'slide->' spans the notes in the third measure. Below the staff, the letters 'RR' are written.

Cover up a chromatic note you don't have or that is difficult to play:

Diagram illustrating a technique to simplify a difficult chromatic passage. On the left, a musical staff shows a sequence of notes between measures 4 and 5. A red circle highlights a chromatic note (F#) that is difficult to play. An arrow labeled 'Changes to' points to the right. On the right, the same musical staff shows the same sequence of notes, but the chromatic note is replaced by a slide (indicated by a curved line over the notes) that covers the difficult note. Below the staff, the letters 'LL RR' are written.

# Hammered Dulcimer Celtic/Rhythmic Embellishments

## Add Fullness and Interest

### Woodchoppers Reel

Changes to

RR

Detailed description: This block shows a musical transformation. On the left, a staff with a treble clef and a key signature of one sharp (F#) shows a melody from measure 10 to 11. The notes are quarter notes: G4, A4, B4, C5, B4, A4, G4. A blue arrow labeled 'Changes to' points to the right. On the right, the same melody is shown, but the note B4 in measure 11 is circled in red and has 'RR' written below it, indicating a hammered note.

### The Moon and the Seven Stars

RR

Changes to

RR L

RR RR RR

Detailed description: This block illustrates rhythmic embellishments for 'The Moon and the Seven Stars'. The top staff shows measures 1-3 with notes G4, A4, B4, C5, B4, A4, G4. Above the notes are chord symbols: D above measure 1, G above measure 2, and D above measure 3. Below the staff is 'RR'. The middle section shows measures 10-11. Measure 10 has a chord symbol 'A' above it. Measure 11 has a slur over the notes A4, B4, C5, B4, A4, G4. Below the staff is 'RR L'. The bottom staff shows measures 12-16 with notes G4, A4, B4, C5, B4, A4, G4, A4, B4, C5, B4, A4, G4. Above the notes are chord symbols: A above measure 12, (D) above measure 13, (Em) above measure 13, A above measure 14, G above measure 14, D above measure 15, G above measure 15, and D above measure 16. Below the staff are 'RR', 'RR', and 'RR' under measures 12, 14, and 15 respectively.

## Slides (Diddley-dees)

Can be simulated on a hammered dulcimer

- Ascending – usually as a triplet ie. the pickup on Fishers Hornpipe
- Descending – easier – just drag your hammers downwards...

Adds smoothness, fullness

Allows you to cover a lot of notes quickly and easily

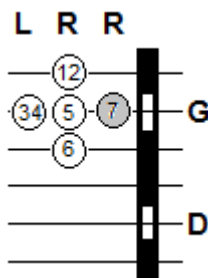
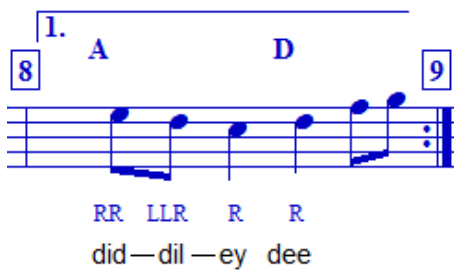
# Hammered Dulcimer Celtic/Rhythmic Embellishments

## 3-Note Slides (Did-dil-ey)

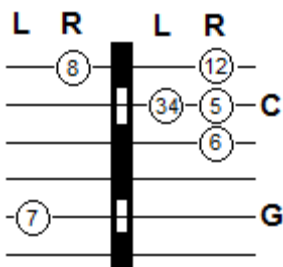
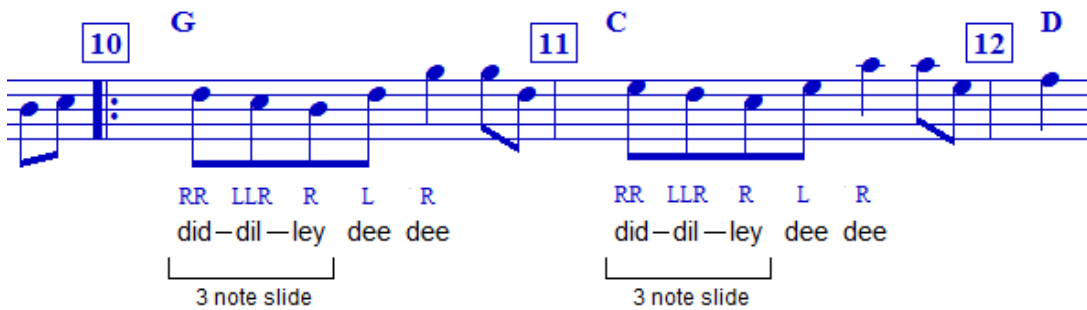
### Bay of Fundy



Changes to:



### Lady of the Lake



# Hammered Dulcimer Celtic/Rhythmic Embellishments

## 3+ Note Slides (Did-dil-ey Dee Dee)

### Bay of Fundy ending

16 D A 17 D

Changes to:



16 D A 17 D

RR LLR L R  
did—dil—ley dee dee

L R

12 C  
34 5  
6 7 G  
8

### Lady of the Lake

2 Em 3 C

Changes to:



2 Em 3 C

RR LLR LR R L R  
did dil ley dee dee dee

L R

12 C  
34 5  
6 7 G  
8